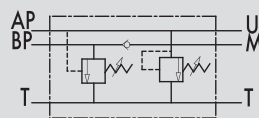
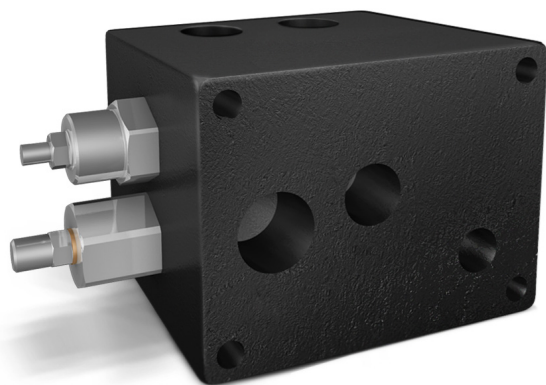


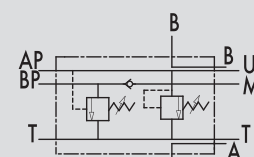
# VALVOLE DI ESCLUSIONE ALTA-BASSA PRESSIONE FLANGIABILI PER PIASTRA NG6-NG10 E NG16

TIPO / TYPE  
**VABP FL**

SCHEMA IDRAULICO  
HYDRAULIC DIAGRAM



VABP FL 6 - VABP FL 10



VABP FL 16

## TWO PUMP "HI-LOW" UNLOADING VALVES FLANGEABLE (BASE NG6- NG10 AND NG16)

### IMPIEGO:

In un circuito alimentato da due pompe in parallelo, valvola utilizzata per mandare a scarico la pompa di maggior portata al raggiungimento di un determinato valore di taratura. Da questo momento in poi l'attuatore lavora con la pompa di minor portata a pressione maggiore, consumando meno energia. È stata studiata appositamente per la flangiatura diretta all'elettrovalvola.

### MATERIALI E CARATTERISTICHE:

Corpo: acciaio brunito  
Componenti interni: acciaio temprato termicamente e rettificato  
Guarnizioni: BUNA N standard  
Tenuta: a cono guidato. Trafilamento trascurabile

### MONTAGGIO:

Fissare la valvola alla centralina collegando BP alla pompa di maggior portata, AP alla pompa di minor portata, T allo scarico e M all'eventuale manometro. Flangiare l'elettrovalvola alla VABP e collegare gli attacchi A e B all'attuatore.

### PERDITE DI CARICO PRESSURE DROPS CURVE

### USE AND OPERATION:

This valve is used in a 2 parallel-working pumps circuit in order to release the excess of the higher flow pump to the tank when this gets the required pressure setting. Since this moment and on the actuator works with the lower flow pumps at higher pressure, consuming less energy. It's ideal for direct flange-mounting on solenoid valves.

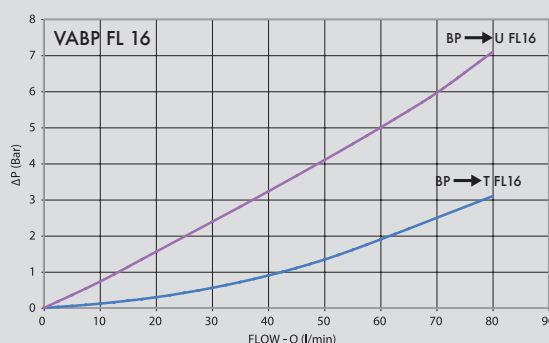
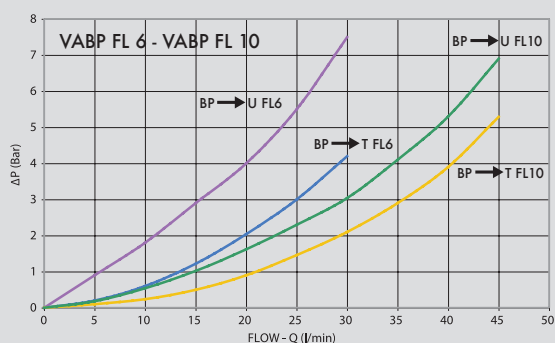
### MATERIALS AND FEATURES:

Body: burnished steel  
Internal components: grounded and hardened steel  
Seals: BUNA N standard  
Tightness: minor leakage

### APPLICATIONS:

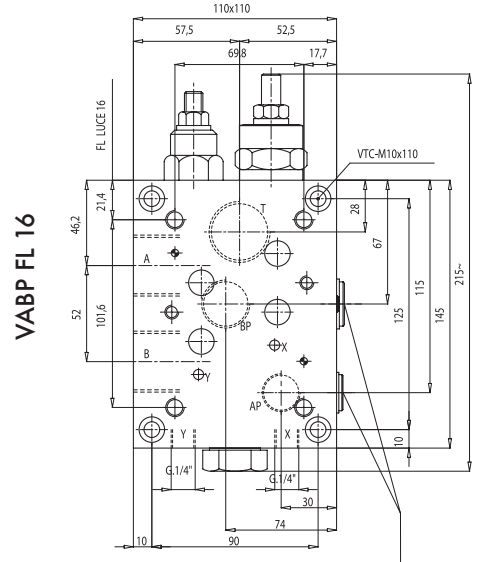
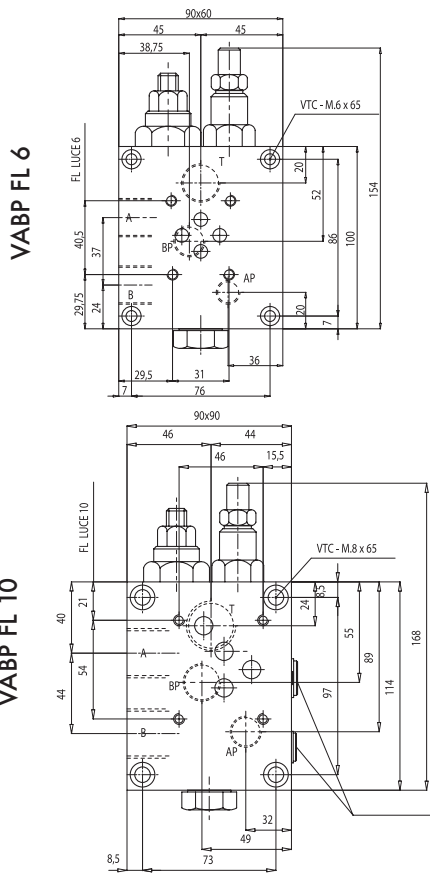
Fix the valve to the pressure flow by connecting BP to the higher flow pump, AP to the lower flow pump, T to the tank and M to the eventual manometer. Flange the solenoid valve to the VABP and connect ports A and B to the actuator.

Temperatura olio: 50°C - Viscosità olio: 30 cSt  
Oil temperature: 50° C - Oil viscosity: 30 cSt





CODICE CODE	SIGLA TYPE	PORTATA MAX MAX FLOW Lt. / min			PRESSIONE MAX MAX PRESSURE Bar
		AP	BP	T	
<b>V0518</b>	VABP FL 6	20	40	60	350
<b>V0515</b>	VABP FL 10	30	50	80	350
<b>V0516</b>	VABP FL 16	40	100	120	350



Tappi reversibili per pompe fuori serbatoio  
Reversible caps

CODICE CODE	SIGLA TYPE	A	B	T	AP	BP	PESO WIGHT kg
		GAS	GAS	GAS	GAS	GAS	
<b>V0518</b>	VABP FL 6	G 1/2"	G 1/2"	G 1/2"	G 1/4"	G 3/8"	3,854
<b>V0515</b>	VABP FL 10	G 3/4"	G 3/4"	G 3/4"	G 3/8"	G 1/2"	6,338
<b>V0516</b>	VABP FL 16	G 1"	G 1"	G 1"	G 1/2"	G 3/4"	11,928

**MOLLE - SPRINGS**

VALVOLA VALVE	BP (BAR)	AP (BAR)
VABP FL 6	20-80	50-350
VABP FL 10	20-80	50-350
VABP FL 16	20-80	50-330